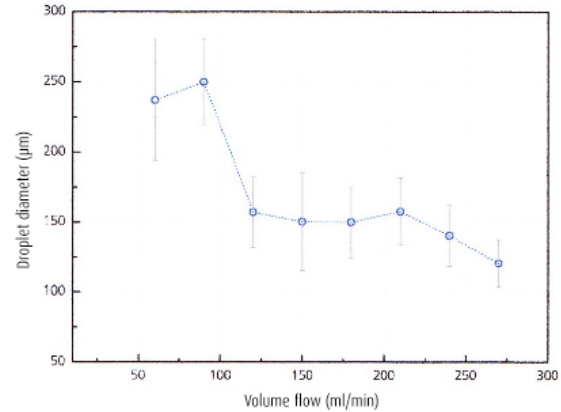
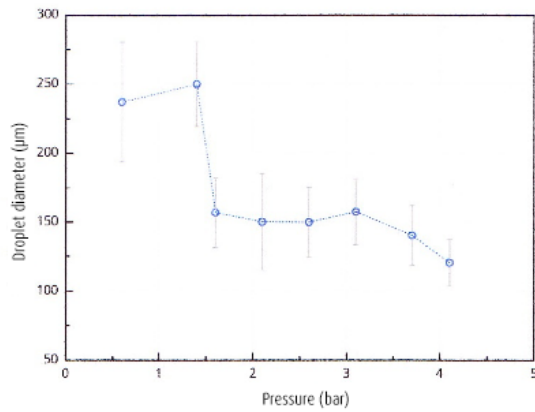
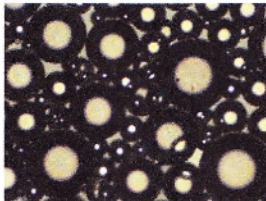


LTF EMULSIFIER

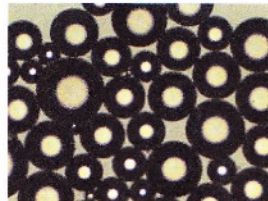


microscopy images of the emulsion

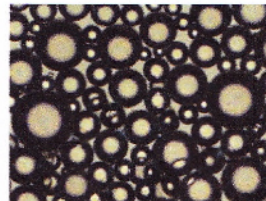
P = 0,6 bar
 $\dot{V} = 60$ mL/min



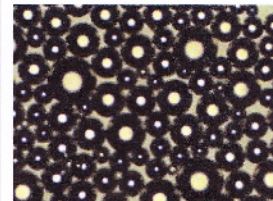
P = 1,4 bar
 $\dot{V} = 90$ mL/min



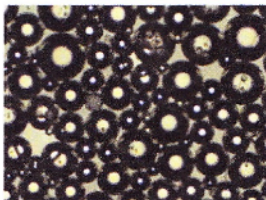
P = 2,1 bar
 $\dot{V} = 150$ mL/min



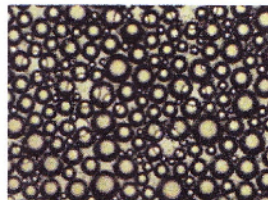
P = 2,6 bar
 $\dot{V} = 180$ mL/min



P = 3,1 bar
 $\dot{V} = 210$ mL/min



P = 3,7 bar
 $\dot{V} = 240$ mL/min



P = 4,1 bar
 $\dot{V} = 270$ mL/min

